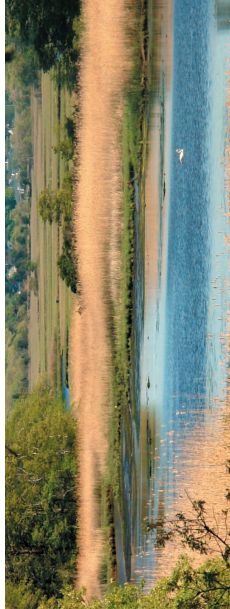


Watch for our Annual Appeal letter arriving in November. If you have year-end giving plans, please consider HCT. Thank You.



Stay tuned to our website
www.HarwichConservationTrust.org
for a schedule
of our
Winter Walks & Talks

See Page 3 for details:

**Free! RSVP for
HCT's Annual
Celebration & Meeting
at Wequasset
on Pleasant Bay
Sunday, Nov. 1st**

**Winetasting Dinner
at The Port Restaurant
in Harwich Port
Wednesday, Nov. 18th**



**HARWICH
CONSERVATION
TRUST**
PRESERVE LAND FOREVER

P.O. Box 101, South Harwich, MA 02661

Address Service Requested

Printed on recycled paper with soy-based ink

NON-PROFIT
ORG.
U.S. Postage Paid
HARWICH, MA
PERMIT #63



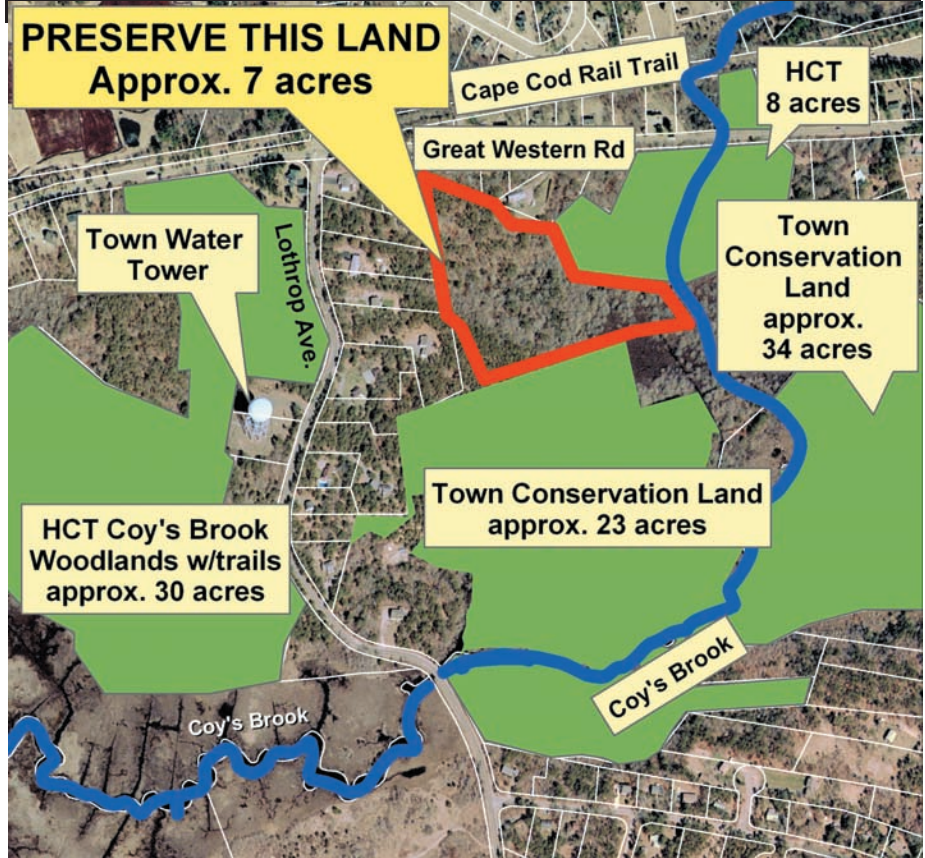
HARWICH CONSERVATION TRUST

www.HarwichConservationTrust.org

PRESERVE LAND FOREVER

FALL 2009 NEWSLETTER

UPDATE: \$28,500 left to raise by Nov. 15th! - see page 5



IN THIS ISSUE

Reserve now: Fall Winetasting Dinner at The Port *page 3*
Free! RSVP for HCT's Annual Celebration at Wequasset *page 3*
Memorials/Gifts *page 4*
Land Protection (Phase 2, Coy's Brook Woodlands) *page 5*
Business Support *page 6 & 7*



HARWICH CONSERVATION TRUST

P.O. Box 101
South Harwich, MA 02661
508-432-3997 • hct@cape.com
www.HarwichConservationTrust.org

BOARD OF TRUSTEES

President - Robert F. Smith, Esq.
Vice President - Thomas M. Evans
Treasurer - Edward A. Rubel
Secretary - Donna J. Peterson

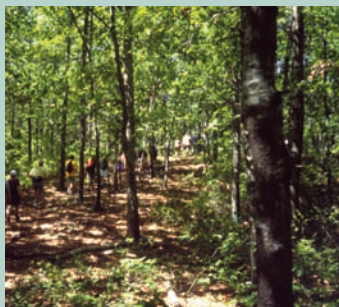
William F. Baldwin, Marilyn Barry,
Matt Cushing, Colin A. Leonard,
Bruce Nightingale, William R. Schumann,
Andrea Silbert

STAFF

Executive Director - Michael W. Lach
*Outreach and
Stewardship Coordinator*
Ryan J. Mann

HCT's Mission

HCT preserves land
to protect woods,
water, wetlands, wildlife
and our shared quality
of life in Harwich.



RSVP for HCT's Annual Celebration and Meeting on November 1st. Join us to honor volunteers with HCT's EverGreen Awards for outstanding efforts to protect and enhance wildlife habitat. The group award will be given to the volunteers listed below who discover and certify vernal pools:



Vernal pools provide vital habitat
for the Spotted Salamander

Rain Ryder, Peggy Rose, Kathleen Welch, Chris Singer (2009 coordinator), Tony Pane, Beth Bierbower, Kathy Fogle, Betsy Sanders, Beth & Terry Fletcher, Evelyn Tobey, Jan Cormier, Susan (Sue) Lin, Danielle McKenna, Vince & Eva Dewitt, Lou Parker, Paul Schlanski, Richard Cooper, Kelly Sattman Lynch, Anya Sweetland, Larry Seberg, Christin Marshall, and Monica Farmer.

The individual award will be given to Beth Bierbower for her work on a range of projects including the eel migration ramp, Mission Wolf, vernal pools, and office organization.

For more information:
call (508) 432-3997
or email hct@cape.com



61st Anniversary
1948-2009

CASE
CONSTRUCTION

- Containers
- Mulch
- Loam
- Stone
- Driveways

Childs
SO. DENNIS, MA

- Rentals
- Service
- Parts
- Trailer Sales

508-398-2556
www.robertchildsinc.com

169 Great Western Rd
South Dennis



Tree Removals • Stump Grinding • Tree & Shrub Pruning • Free Estimates
MA Certified Arborist #2290 • Fully Insured
508-945-1554



Northeast's Full Service Excavation Company

RESIDENTIAL & COMMERCIAL

32 Sara Ann Lane, Brewster, MA 02631
Toll Free (866) 896-7713 • northeastconstructioncorp.com



259 Queen Anne Road, Harwich, MA 02645
508-430-2800 • 866 SHED KIT (743-3548) • www.pineharbor.com



7-th Annual Golf Tournament Sponsors

Back Office Associates, Cape Cod Cooperative Bank,
The Cape Cod Chronicle, Wequasset Resort

Abercrombie Hair Salon	EAS Painting	Peterson Realty Inc.
Alexander's Nantucket Lightship Basket	Fairway Café	Pewter Crafter
Anchor Marine, Inc.	Fettig Tile Company	Plum's Package Store
Andale Café	Forest Beach Design	Potted Geranium
Bates Hardware	Four Hundred East	Port Framing Gallery
BB's Automotive	Gardens By The Sea	Heinz Profit
Benson, Young & Downes Ins.	George's Fish Market	R&K Landscape
Bothfield Financial	Handkerchief Shoals Inn	Randall Sports Fishing
Box Office Café	Handren Bros. Building	Realty Executives
Buca's Restaurant	Hannon Electric	The Boston Red Sox
Cape Aquatics Pools & Hot Tubs	Harwich Paint and Decorating	Rockland Trust (Chatham)
Cape Cod Associates	Harwich Pet Supply	Rick Roy Construction LLC
Cape Cod Claddagh Inn & Irish Pub	Harwich Remodeling Center	Royal Health Group
Cape Cod Computer	Harwich Heating & Cooling	RPM Carpets, Inc.
Cape Cod Embroidery	Harwich Spirits Shoppe	Ryder & Wilcox
Cape Cod Five	Heather's Hairport	Sanders, Walsh & Eaton
Cape Massage	Hemeon's Garage	SDM Electric, Inc.
Cape Sea Grille	Henry T. Crosby & Son	Shaws Market
Cape Sign	Hess Route 137	Shenanigans
Chatham Classic Yacht Charters	Hot Stove Saloon	Robert F. Smith, Esq.
The Chatham Corner Store	Dennis Hoye, Head Pro	Stello Construction
Wm. Coffin & Sons Rubbish Removal	Hudson Eldredge Insurance	Stinson & Ford
Coldwell Banker Murray RE	John Martin Excavating	Stop & Shop
Colson Landscaping	Kennedy Gallery & Studios	Stove Place II
Commodore Inn	La Barge Real Estate	Subway
Concrete Cuts & Coring	Lower Cape Irrigation	Summit Insulation
Cranberry Jewelers	Luddy's Paint & Wallpaper	Sundae School Ice Cream
Cranberry Liquors	William Maloney	Matthew Sutphin
Crocker Nurseries	Matt's Automotive	Thayer Florist
CVS Pharmacy	Mayflower Glass	The Port
Dairy Queen	M. Smith & Company	Today Real Estate
Sal Desantis	Mid-Cape Home Centers	Tree Wizard
Dino's Breakfast	Monahan & Company	Villa Roma
Driscoll Plumbing & Heating	Moran Engineering, Inc.	Waystack Realty
Dunkin Donuts, Z Donuts	Nauset Disposal	Weatherdeck Restaurant
	Nor'east Comfort	White Hen Pantry
	Northern Paving	Windsong Antiques
	Dan O'Leary, Landscape	Winstead Inn & Beach Resort
	Personalized Fitness Solutions	WB Mason Office Supplies

Wildlands Musical Stroll? On September 27th inclement weather cancelled the Stroll in the Town of Harwich Bell's Neck Conservation Lands. The Harwich Conservation Trust hopes to reschedule at a future date.

Many thanks to those who worked so hard to organize the event, including: Mary Metzger, Dot Hemmings, Peggy Rose, Susan Weinstein, Jon Page, Donna Scheuchenzuber, Mike Metzger, all of the musicians, the Thacher family, Harwich Highway Department, Recreation Dept., Conservation Commission, Board of Selectmen, Trail Committee, Harwich Police Dept., The Guild of Harwich Artists, Rebecca Lach (brochure illustrations) and our many Harwich Conservation Trust volunteers.



Jake O'Callaghan



Free! RSVP for HCT's Annual Celebration & Meeting

Wequasset on Pleasant Bay
Sunday, Nov. 1st, 4-6pm



Featured Speaker: Ornithologist Vern Laux
Vern's "Bird News" can be heard weekly on Cape & Islands' NPR.

Join us to honor HCT's Conservationist of the Year
and to honor outstanding volunteers with HCT's EverGreen Awards.

RSVP by October 28th for this free event.
Call HCT at 508-432-3997 or email: hct@cape.com

SPACE IS LIMITED. Reserve NOW!
15th Annual Fall Winetasting Dinner
hosted by **The Port Restaurant** in Harwich Port
Awarded "Best of the Cape & Islands" 2009, 2008, 2007

Wednesday, November 18, 6 - 9 p.m.

\$80 per person
multi-course dinner, dessert,
six fine wines & gratuity all included

Enjoy your evening
while helping HCT preserve land.

View the menu and reserve on-line at
www.HarwichConservationTrust.org

or mail a check payable to:
Harwich Conservation Trust

P.O. Box 101, South Harwich, MA 02661

For more information: call (508) 432-3997
or email hct@cape.com





NS

- | | |
|--|---|
| In Honor of Amy, who loves animals
Peter & Bridget O'Rourke | In Memory of Joan O'Callaghan
Alice Webster |
| In Honor of Robert F. Smith
Eleanor L. & Warren G. Smith | In Memory of Philip S. Eagan
Mary M. Eagan |
| In Honor of Eva DeWitt, 8 (daughter)
Vince DeWitt (father) | In Memory of Ralph "Bud" Angier
Susan T. Shoch |
| In Honor of Tom Garvey & Chris Brotz
Barbara Garvey | In Memory of Lee Baldwin
Colin & Jane Stevenson |
| In Honor of Harwich EMTs
Robert J. Naughton | In Memory of Elizabeth L. Pring
Kenneth F. Pring |
| In Honor of Marge Marion
Connie L. Pina | In Memory of Helen Rice
Douglas E. Rice |
| In Honor of Charlotte Clark
Carolyn & John Fletcher | In Memory of Ernest Bergeson
Mrs. Martha Bergeson |
| In Honor of Anne (Conway) Hagloff &
In Memory of Russ, her husband
Mary Sylva | In Memory of My Beloved Wife Evie
Ron Armbruster |
| In Honor of Richard M. Francis's Birthday
Susanna Clare May | In Memory of Marjorie Kinney
David Haller |
| In Memory of my dog Colin
James A. Barker | In Memory of Walter Kulesza
Pauline Kulesza |
| In Memory of Mr. & Mrs. Dayton Smith
William A. West | In Memory of Charles F. Palmer
Carole Palmer |
| In Memory of Isabel Smith
David Crestin & Elizabeth Bierbower
Paul J. Cuddy, Jr. | In Memory of Waldo Stevens
Elizabeth Arnold Stevens |
| In Memory of Dan & Mary Larkin
Dan & Kate Larkin | In Memory of Inez Ward
Alan Ward |
| In Memory of Richard G. Baldauf
Ms. Joanne Baldauf | In Memory of Doris & Howard Doane
Sarah Doane |
| In Memory of Evangeline & Clarence Lovell
Robert & Maria Bradley | In Memory of Brian Carbone
James Carbone |
| In Memory of Kenneth & Dora Eaton
Lois E. Eaton | In Memory of My Parents
Diane M. Silverstein |
| In Memory of Scot McClain
Mr. & Mrs. Henry Peterson | In Memory of all the pets I have loved & who
really owned me.
E.J. Decker |
| In Memory of Helen Wall Thompson
David Hugh Thompson | In Memory of Jeanne Ritzman
Charles A. Forbes |
| In Memory of Jane A. Tivnan
Ruth M. Connaughton | In Memory of Bryant Wick
Roberta (Bobbie) McDonnell |
| In Memory of Recce & Elaine Kennedy
Robert A. Kennedy | In Memory of Sylvia Corwin
Annette E. & Julius S. Cremisi |
| In Memory of My Mother, Kathryn Howes Alvord
Clark Alvord II | In Memory of Seward Highley
Annette E. & Julius S. Cremisi |
| In Memory of Marcia Iddles
Andrea Aldrovandi | In Memory of Eddy Brown
E.W. Brown |
| In Memory of Dr. Russell Smith
Doris B. Schaub | In Memory of Dorothy M. Davis
Joan & David M. Davis |
| In Memory of Sally Haller
David A. Haller | In Memory of George Whitehead
Rick Whitehead |



Nancy Viall Shoemaker

Thanks to many donations and a significant \$32,500. grant from an anonymous family foundation, **we have only \$28,500 left to raise by November 15th.** We still need your help to purchase and preserve 7 acres in the Coy's Brook/Herring River Watershed. The 7-acre site of oak/pine woodland sloping to wetland on Coy's Brook will connect 57 acres of Town conservation land with another 8 acres of HCT land bordering Great Western Road. The Trust has a history of protecting Coy's Brook, which is the major tributary to the Herring River, Cape Cod's second largest river system behind the Bass River. *We can repeat land conservation history with your help.*

Hark back to HCT's first "Coy's Brook Woodlands Campaign" in 1997, when supporters raised \$225,000 to preserve 16 acres from becoming a 12-lot subdivision. Over the years, additional acquisitions increased the assemblage to nearly 30 acres on the west side of Lothrop Avenue. This protected area is featured in HCT's Trail Guide and visitors enjoy woodland walking trails while glimpsing panoramic marsh vistas.



Vincent De Wit

Like the land saved in 1997 (left), the new "Phase 2, Coy's Brook Woodlands Project" helps protect water quality.

Wild Turkeys, active during the day, roost at night.



NS

The new site is east of Lothrop Avenue. Not only does the land connect conservation sites on the north and south, but it also supports habitat diversity ranging from woodland to wetland to freshwater stream. And this project advances HCT's *Save Land - Save Water Initiative*, a long-range plan to preserve priority lands that protect water quality.

The map on the cover illustrates a compelling need to preserve this land, thereby protecting woods, water, and wildlife. If you can contribute, we welcome your donation in the attached reply envelope or online at www.HarwichConservationTrust.org. *You make land conservation possible.* Thank you for your support.